



IMG INTERNATIONAL
Via Masero, 57
10010 SCARMAGNO (TO) ITALY
Phone +39 0125.63.92.89
Fax +39 0125.71.26.40
Email: info@imginternational.it
www.imginternational.it



WWW.PUBLIC.COM.TO

OUR AIM IS TO SATISFY YOUR REQUESTS

OILFIELD EQUIPMENT SUPPLIER



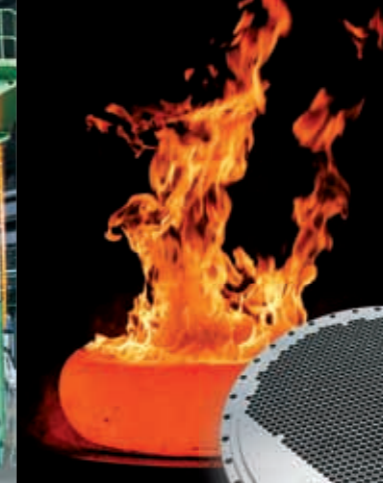
www.imginternational.it



IMG INTERNATIONAL srl

is a professional and dynamic company with ten years of experience in the oilfield and petrolchemical sector, specialized in supplying a wide range of products. The close and direct contact with the manufacturer allows us to satisfy our client's requests in a short time. Thanks to our production of flanges, rings and forged pieces, insulating joints and any type of special flanges we can satisfy any kind of request. Moreover, at our warehouse located in Scarmagno (Turin), you can find at your disposal and ready on stock ANSI flanges from 1/2" up to 24" class 150#, 300#, 600#, 900# and #1500 in A105 material.

STEEL FORGING IS OUR PASSION



TUBE SHEETS

OUR GROUP



FORGING PLANT: OFFICINE BINDA & GALPERTI Srl

Since 1964, Officine Binda & Galperti has been specializing in the manufacture of drop forged, stamped and finished flanges made from carbon steel, stainless steel and all grades of material, namely welding neck, slip on, flat, blind, threaded flanges according to ANSI - API - EN, etc specifications. They can supply forged special products as per client's drawing and also Anchor flanges and Insulating Joints. Thanks to an advanced company management and process technology combined with the accurate machining of pieces and high quality raw material, Officine Binda & Galperti has obtained important approvals and certifications like ISO 9001:2000, TUV and RINA, and some other End User approvals around the world.



ANCHOR FLANGES

SARM

ASSOCIATED FORGING PLANT: SARM Srl

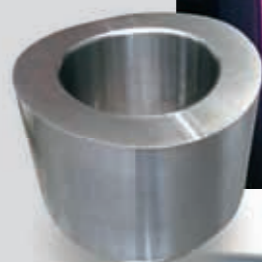
In cooperation with IMG International, from January 2009, Sarm srl opened the new Oil & Gas Division. They can produce any kind of forged body according to technical drawings and standard flanges from 10 kg. up to 600 kg. in any type of material. Forging plant occupies an area of 45000 m² of which 13000 m² are covered. Forging system is composed of:

- 6 Preheating Furnaces
- Swing wheel Line PVM 400
- Drop forge hammer line MPM 2500 KGM
- Hammer Line Eumuco 7500 KGM
- Hammer Line Bechè 20000 KGM
- Press Line 2500 ton.
- Press Line 1600 ton.

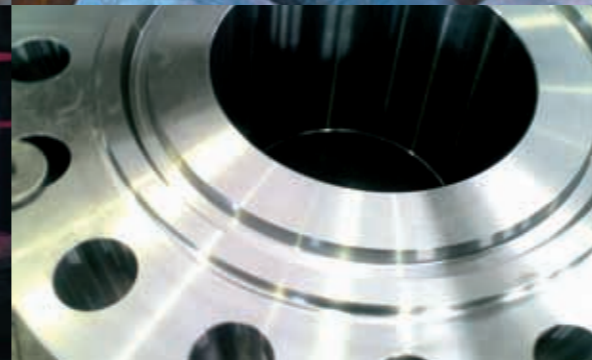
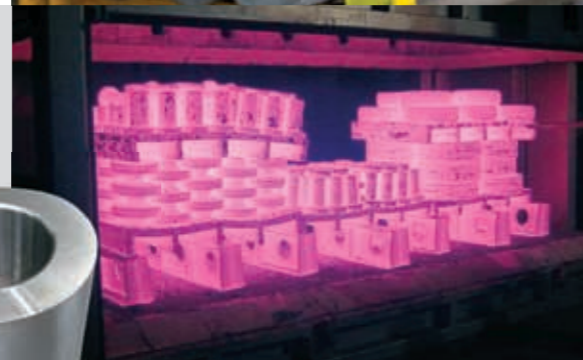
PIPING MATERIAL

FLANGES

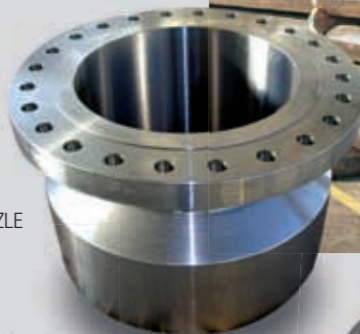
A huge range of flanges in any kind of steel and without any limitation in size. In particular we can supply welding neck, blind, slip on, socket weld, lap joint, long welding neck, spectacle blind, threaded. Also special pieces such as anchor flanges, adaptor flanges, swivel flanges, drip rings, flanges with overlay cladding and closures for pig launcher and receiver.



SPECIAL PRODUCTS



NOZZLE



NOZZLE



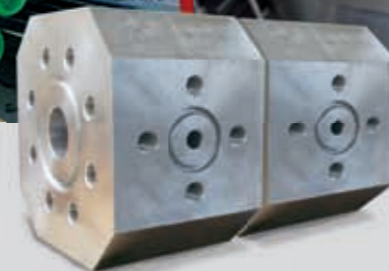
FLOW CROSS



SWIVEL FLANGES



FLANGES



WELDO FLANGES



SEAMLESS PIPES

A wide range of seamless pipes in any kind of steel and size.

GASKETS

Any kind of gaskets: spiralwounds, ring joints, graphite, PTFE lined, etc.

STUDBOLTS

Bolts and nuts, screws, studbolts threaded on full length and special pieces according to drawing.

INSULATING JOINTS

Pipeline Insulating Joints are used worldwide for permanently controlling the flow of electrical currents or electrically isolating pipe sections in pipes and piping systems. Upon request, we can supply Mono-Block Insulation Joints according to your specification.

FORGED FITTINGS

Forged fittings such as SW elbows, hex nipples, plugs, bushings, tees, etc.



BW FITTINGS

Wide range of seamless and welded BW fittings.